



VOICES from the PAST

Newsletter of the Inverell District Family History Group Inc

ISSN 0815/1903 August 2024 Issue No. 140



IDFHG Celebrates 40 years!

**MEETINGS ARE HELD 3rd SATURDAY OF THE MONTH
1:30 PM AT THE RESOURCE CENTRE— INVERELL SHIRE PUBLIC
LIBRARY 55-59 CAMPBELL ST INVERELL**

The Inverell District Family History Group Inc may be contacted at:

Address: Inverell Shire Public Library
55-59 Campbell St,
Inverell NSW 2360

Postal: PO Box 367
Inverell NSW 2360

Email: inverellfamilyhistorygroup@gmail.com

Web: www.inverell.nsw.gov.au/inverell-family-history-group/

Membership:

Fees for the present financial year are:

Single membership	\$35
Family membership	\$45

Resources:

The resources of the History Group are available for use at:

Inverell Shire Public Library, 55-59 Campbell St, Inverell
Mondays, Wednesdays & Fridays 10am - 3pm
CLOSED TUESDAYS & THURSDAYS

Research:

**Research fees are \$35.00 per surname
including p & h**

A charge of 30c per copy applies for photocopying.

Our volunteers will deal with enquiries in their order of receipt. Replies may take up to four weeks, so please wait patiently.

Enquiries should be made to:

The Secretary

IDFHG Inc

PO Box 367 INVERELL NSW 2360

Please enclose your email address with research enquiry.

2024/2025

President: Kathy McLeod

Secretary: Judy Pischke

Treasurer: Lorraine Watson

Newsletter Editor: Ken McLeod

IDFHG Inc is a member of NSW & ACT Association of Family History Societies

history on the macintyre

IN THIS ISSUE

President's report.....	3
What's new in the Library.....	4
Research update.....	5
IDFHG 40th Anniversary.....	6
Sandy Knowe.....	8
Outing to Inverell Club.....	10
Meet a member.....	12
Devine Collection.....	13

Voices from the Past is the official journal of the Inverell District Family History Group Inc and is published in February, June and October each year.

Opinions expressed and statements in this newsletter do not necessarily represent those of the group, which accepts no responsibility for them.

Other Societies or Groups may copy original material published in this newsletter, provided the source is acknowledged.

Otherwise, production of articles in *Voices from the Past* may be made only with the written permission from the Group.



Next Meeting
Saturday November 16th at 1pm
Inverell Shire Public Library 55-59 Campbell St, Inverell
All Welcome



THE INVERELL CLUB
ESTABLISHED 1902



12th Antique and Collectables Auction **Inverell Club**

corner of Campbell & Evans Streets.

Saturday 19th Oct. 2024 @ 10am

Viewing from 9am on auction day and prior evening, Friday 18th. 4-7pm.
 Registered bidders only using number system. Registrations taken during viewing times.

Auction lots include selected items from:

- The estate of the Matchett family, long established residents of Long Plain
- The estates of George Piercen Devine + George Arthur and Melba Devine, long established since 1904 Inverell professional photographers and photo artists.
- Mrs H. Edwards of "Manninghamthorpe" Stanmore, Sydney
- Several other estates where the executor maintains their privacy

\$10 minimum opening bid & \$5 minimum increase bids. Cash, cheque and eftpos available. N.B. All items are openly available for potential buyers to inspect. Please make all condition assessments prior to bidding. A \$2 donation to defray the cost of catalogue printing is appreciated –we are a not for profit community organisation!

Presidents Report 2023/24

Well another year is done and dusted. I can't believe how quickly the years seem to roll by. This year has been marked with many ups, such as our 40th Anniversary, a successful seminar and enjoyable outings and some lows as a number of our key volunteers faced personal bereavement and illness.

Research has continued steadily throughout the year keeping our researchers busy uncovering some of Inverell's rich history. Feedback from our clients has been overwhelmingly positive.

Donated material to add to our collection has continued to roll in. These have ranged from a single photo to a number of large boxes. It is great that so many people feel that our group and the library is a safe & secure repository for these items. Of particular interest is another collection of proofs & negatives from the Devine family. This large collection consists predominantly of buildings, businesses & events and will complement the Devine Portrait Collection we received several years ago.



An initiative we took this year was to have a regular radio spot on STA.FM with presenter Wayne Jones. Broadcasting on a fortnightly basis has helped publicised the groups activities while telling some interesting stories from Inverell's history. The feedback has been positive and we are now gaining a following. We set out this year to conduct a group activity in the months we did not have a meeting. Suggestions were made and although not all were accommodated there has been a great mix of outings, guest speakers & social occasions.

In September a number of our members were involved in the display for the Gilgai War Memorial Centennial event. A huge amount of work & research was undertaken for this display and I would like to thank all those involved.

In October we learnt of all the war memorials in the district from guest speaker Graham Wilson. A retired UNE lecturer and former heritage officer, his talks are always interesting & informative.

In March we held a successful seminar on various aspects on researching history. Our speakers were Sonya Lange who spoke on resources available through the library, Elizabeth Wiedemann on oral history, Di Atkinson on how to use Family Search and myself on how to access National & State archives.

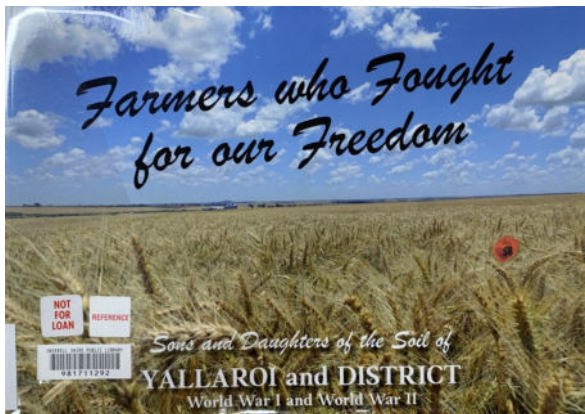
In April & July we organised outings to Wing Hing Long & the Inverell Club. These were hugely enjoyable and interestingly both accompanied by a morning tea of scones with jam & cream. A big thanks must go to Tony Sonter for offering to organise the tour of the Inverell Club.

The highlight of the year for me though was in June when we held our celebratory morning tea for IDFHG 40th Anniversary. At this well attended event we were able to reminisce on the history of the group, remember members who are no longer with us and generally pat ourselves on the back for a great achievement. We were also able to use this event to recognise the service of 3 of our long term members and volunteers, Gloria, Judy & Betty with Lifetime Membership.

So once again I would like to thank the staff at the library for their continuing support and friendly cheery nature. Nothing ever seems to be too much trouble and collaborating with them is always easy. I would also like to thank all the members for their support of the group, for turning up to events, for volunteering to staff our room, for researching, sorting material, filing, processing negatives & photographs but most of all for having a passion for history.

Kathy McLeod
President

What's New in the Library



Farmers who Fought for our Freedom: Sons and Daughters of the Soil of Yallaroi and District from World War I and II. By Marion Fitzgerald.

The Yallaroi settlement was a soldier settlement scheme based on the division of the old property "Yallaroi" into 22 smaller settlement blocks of about 1181 acres each. The publication lists the servicemen and women who were successful in drawing a block.

The South Family.

The descendants of Benjamin Barland South, born 1770, Westminster Hyde Park, London and died in Richmond NSW in 1836. Benjamin South had 6 children and has many descendants in the Inverell area.

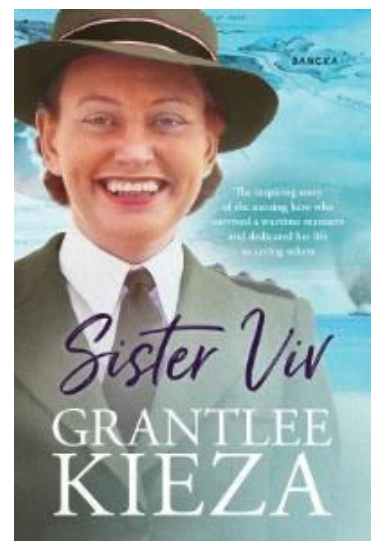
Newstead North Conservation Management Plan for the Newstead North shearing shed.

This plan was commissioned by the Paraway Pastoral Company. The plan recommends that the Newstead shed is to be recognised for its cultural heritage significance by placing it on the State Heritage Register. The plan also recommends the upkeep of the site through various conservation works and a maintenance program. The plan contains a lot of historical information on the Newstead North property and early owners such as the Anderson family. It also details significant sites and their cultural significance with particular reference to renowned Australian Impressionist artist, Tom Roberts.

Sister Viv by Grantlee Kieza.

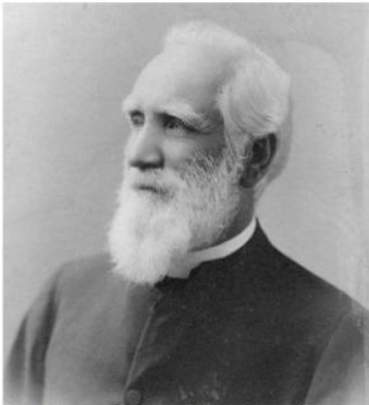
Bangka Island, 1942. Australian Army nurse Vivian Bullwinkel was just 26 when Japanese soldiers marched her and her fellow nurses into the shallow waters of a remote beach to be executed. Miraculously, Vivian would be the lone survivor. The Lieutenant-Colonel would also be the first woman to be honoured with a statue at the Australian War Memorial for her extraordinary bravery and service. Growing up in Broken Hill, New South Wales, Vivian started work at a local hospital and joined the Australian Army Nursing Service in World War II. When the Japanese attacked Singapore in 1942, she and 64 other nurses were ordered to evacuate, but soon their ship was bombed by enemy aircraft. Some of the women drowned, but Viv made it to Radji Beach on Bangka Island, off Sumatra, with 21 of her nursing colleagues. There Japanese soldiers forced the women to wade back into the sea, and as Vivian felt a bullet slam into her back, she fell face down into the water then waited to die as the soldiers bayoneted survivors. Somehow Vivian lived.

Local Inverell nurses Kathleen Neuss and Marjorie Schuman were among the 64 other nurses who died that day.



Research Update

Johan Schutz and Johanna Gentz were born in Germany in 1835 and 1838 respectively. The Schutz and Gentz families were well known in the Gum Flat area.



Rev Thomas Stirton (photo: from the collection of Mrs Helen Loveday, Inverell)

Reverend Dr Thomas Stirton was born in Scotland in 1828. After studying the Arts & Divinity at St Andrews University he came to Australia c1854. In 1855 he took up an appointment at St Anne's at Paterson. He married Jane Nivison in 1860 and the couple went on to have 5 children. The Stilton's moved to Inverell in 1873 where Thomas served as minister at St Andrews Presbyterian Church until his retirement in 1898. Reverend Stirton died in Inverell in 1906 and is buried in the Inverell cemetery. St Andrews Church in Inverell has a memorial dedicated to him.



George & Eva Bone



George Scobell Bone was born in Devon in 1848. He came to Australia in 1866 and first worked for Henry Dangar at Myall Creek Station before going on to manage Newstead Station. After his marriage to Eva Hayden in 1886 George went into partnership with John Sinclair setting up a stock & Station agency. He later established himself as a financier and on his death in 1926 owned a large property portfolio. George & Eva had three sons, all of whom joined up in WWI. Their youngest son Tony paid the ultimate sacrifice at Gallipoli in 1915. Eva worked tirelessly throughout her life fundraising to help active and returned servicemen and their families. She was known in Inverell as the "Mother of Soldiers" for her efforts during WWI. Eva died in Inverell in 1946.

John Dight—1772-1837

John was born in Axminster, England in 1772. In 1801, with his wife Hannah and infant daughter Sarah, he arrived in Sydney on the "Earl Cornwallis" serving as the ship's surgeon. John was appointed Governor King's surgeon and although he was also granted the right to practice privately there is no record of him doing so. Instead John took up land in Richmond and built his home "Mountain View". John & Hannah went on to have a further 8 daughters & 5 sons. Two of the sons George & Samuel established large pastoral holdings in the Yetman district of which descendants still reside today.



Current Research - Can you help?

"The Grange" - A grand old house in Clive St, Inverell

John Thomas O'Brien— An Irish immigrant who lived on "Erins View" at Graman

The Mahady family from Elsmore & Delungra

Barbara Vernon— Daughter of Dr Vernon she was a playwright & screen writer. She wrote the early scripts for the ABC series "Bellbird"

We have an unidentified photo (right) of a man taken c1941-1942



Inverell District Family History Group 1984-2024 40th Anniversary Celebrations

Celebrations were held in June to mark the 40th anniversary of the formation of the IDFHG.
What a fantastic achievement!



A highlight of the celebrations was the presentation of Life Memberships to three of our hard working long serving members, Judy Pischke, Gloria Baldwin & Betty Deverell.



Beryl Hamilton saying some kind words.



Above—Bill & Margaret Bottom enjoying the festivities

Right— Our current president Kathy McLeod and Library Manager Sonya Lange relaxing after the formalities.



40th Anniversary Celebrations continued

A history of the IDFHG was displayed on the day along with a slideshow highlighting the many milestones of the group and remembering our many members throughout the years.



Presidents

1984-1985



Ann Hodgson

1984-1985



Marie Williamson

1987-1988



Tony Dale

1989



Nancy Gott

1990-1992



Marie Bryon

1993-1994



Marie Williamson

1995-1997



Beryl Williams

1998-2000



Maxine James

2001



Marie Bryon

2002



Beryl MacQuaker

2003



Geoff Millard

2005-2011



Ann Hodgson

2012-2013



Ann Church

2014-Current



Kathy McLeod

In the Beginning

Foundation Members

The first meeting of the Group was held at the new Inverell Shire Council Chambers on 29th May 1984 with the following people present: Jewel Brooks, Gaye Doyle, Mrs Poppy McCosker, Mrs D. Bunce, Mrs M. Northcott, Helen Cooper, Tony Dale, Pam Truman, Mervyn Williamson, Shirley Shirley, Fiona Dailey, Mr J. R. Black, Beth Farrell, Norma Clay, Nancy Gott, Marie Lute, Paul Gibson, Bill Bottom, Margaret Bottom, Mrs G. Hodgson, Tracey Hobday, Beryl Williams, Fleur Harscovitch, Lynda Strong, Robbie Burge and Ann Hodgson.

Foundation Office Bearer

President: Ann Hodgson
Vice Presidents: Tony Dale and Mrs Poppy McCosker
Secretary: Tracey Hobday
Treasurer: Lynda Strong
Publicity Officer: Marie Lute



Margaret Bottom & Beth Farrell



Tony Dale & Bobbie Miller



Beth Farrell, Marie Lute, Lynda Strong, Bill Bottom

Premises

2005-2010 Byron Arcade, Evans St



Tours & Outings



2017 - Wariaka Museum Opening



2017 - Inverell Town Walk



2017-Christmas Lunch at the General Merchant



2019-Saumarez House Tour



2019-Myall Creek Station Tour



2024 - Wing Hing Long

“Sandy Knowe”



Earlier this year, members of the IDFHG obtained permission from the Cook family to inspect the old homestead of “Sandy Knowe” which is located 5.5 kilometres south of Inverell on the Bundarra road. Elizabeth Wiedemann was part of this small group and we were very keen to find some details on this distinct old building on Thunderbolt’s way, a busy road connecting Inverell to Bundarra, Armidale, Tamworth, Uralla, Gilgai and Tingha.

During its 150 year history the property has only had a handful of owners. This may be why the house, blacksmiths shop and stables still retain many original features.

The land was originally purchased in 1872-3 by John Humphries, a free selector. At this time Tin mining was gaining momentum in the district and roads such as the Bundarra Rd were becoming increasingly busier thoroughfares. Although not conclusive, the house is thought to have been built by James Crimmins who in 1876 applied to transfer his hotel licence from his establishment in Inverell to “a new house he has recently built on Gilgai Road”. (*Armidale Express* 30.6.1876) The application was denied and the hotel never eventuated, however even today the layout of the house clearly shows how it would have been used for hotel accommodation. Records show that from about 1880 until his death in 1900, William Rogerson resided at “Sandy Knowe”.



Many rooms in the house have direct access onto the verandas that surround much of the house.

William, a bachelor, was a “buyer of fat stock” and after building a slaughterhouse on the property he operated as a butcher. Robert Hardy worked for William during this time helping with stock management and the butchery business. Robert and his large family lived in the house. After William Rogerson’s died from accidentally drowning in the McIntyre River, the Hardy family moved into Gilgai.



The old butcher shop (left) contains a large meat safe (right)

Mr David Strahley of Barraba was the next owner. The Strahleys bred high class sheep, cattle and horses, including race horses, some of which were “noted country performers”. David & his wife Annie raised a large family whilst at “Sandy Knowe” and many Strahley descendants still live around Inverell. The family purchased surrounding land extending the property to 1246 acres. After David & Annie’s deaths in the early 1950s their son Colin took over the farm until his death in 1968.



View of Strahley’s property “Sandy Knowe” c1966

“Sandy Knowe” was then sold to Cedric and Joan Cook. The Cooks installed electricity in the house and added an inside bathroom. Fortunately, Cedric and Joan recognised the heritage value of “Sandy Knowe” and while they kept the house habitable they also maintained the historic attributes of the house and outbuildings. Joan and Cedric died in 2022 and then the property was prepared for sale and listed in 2024 by their family.



Top left— the old cow shed still stands today.

Top right—the same cow shed in 1966



Left— The blacksmiths shop still contains the old forge complete with bellows.

Group Outing to The Inverell Club

In July members of IDFHG went to the Inverell Club for an outing. We were treated to an interesting tour of the building and told its fascinating history by club members Tony Sonter and Robert Walburn. A delicious morning tea with scones, jam & cream was also provided.

The Club is located just across the road from the library. This fine old building is well known in Inverell and has a definite federation style about it, as it was built in 1909.



The Inverell Club itself was formed in 1902, the result of a meeting of over 20 gentlemen in Mr John Borthwick's office. Soon after, the numbers swelled to nearly 50. Membership was quite exclusive with members drawn from established businessmen, professionals and pastoral families in the district. The first president of the club was Mr D. S. Anderson who was supported by Mr C.G. Gordon as secretary and Mr J. Slade as treasurer. Committee members included John Borthwick, T. Mather, J. W. Anderson, Dr. Morton, Dr. Lane and H.A. Merewether.

The Annual subscription fee was set at 3 Guineas. According to the Reserve Bank Inflation Calculator, 3 guineas or £3/3/- in 1902 is now worth around \$540. The fee structure obviously worked as a barrier to many people, helping to make it an exclusive club. Upon requesting membership to the club, applicants also had to go through a vetting process as well, and any would be members could be literally blackballed.

The original club was housed in a weatherboard building on the corner of Evans & Vivian Streets. The building was purposely designed & built as a club house by Mr G. Cruickshank who charged £50 per annum. In 1909 the Inverell Club building, as we know it, was opened. The architect was Mr J. Manson of Sydney and it was built by Wheelwright & Anderson of Ashfield in Sydney.



FIRST CLUB PREMISES 1902 — 1909

Group Outing to The Inverell Club cont.....

The total cost came to £3918/7/8. The club raised the money for the build by issuing debentures which were eventually redeemed in 1924. The club consisted of a number of rooms including a large billiard room, lounge and reading room. Regular suppers, dinners & balls were held and alcohol including brandy, whiskey, gin, rum, English beer & French Champagne were served. While women at this time were not allowed to join the club, members were able to invite their lady friends to afternoon tea on certain days.



In the early days of operation, staff consisted of the Steward & his wife and a female assistance who were all in residence. Call buttons were placed strategically around the club so the steward could be readily summoned.

Shame and Scandal in the Family

Song by Shawn Elliott/ Sir Lancelot

In Trinidad there was a family
 With much confusion as you will see
 It was a mama and a papa, and a boy who was grown
 Who wanted to marry and have a wife of his own
 He found a young girl, that suited him nice
 And went to his papa to ask his advice
 His papa said son, I have to say no
 This girl is your sister but your mama don't know

Woe, is me, shame and scandal in the family
 Woe, is me, shame and scandal in the family

A week went by and the summer came 'round
 And soon the best cook in the island he found
 He went to his papa to name the date
 But papa shook his head and to him he said
 You can't marry this girl, I have to say no
 This girl is your sister but your mama don't know

Woe, is me, shame and scandal in the family
 Woe, is me, shame and scandal in the family

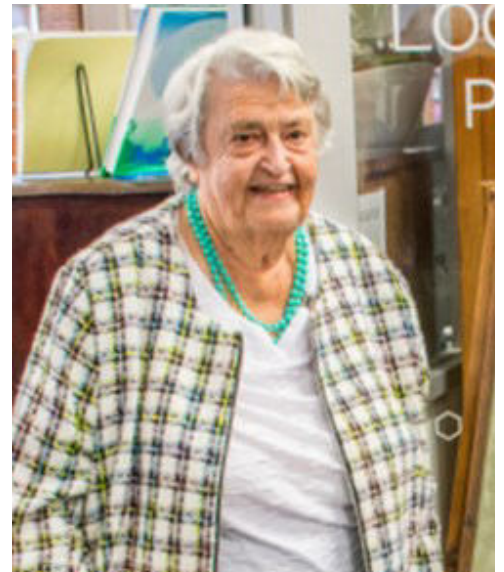
He went to his mama and covered his head
 And told his mama what his papa had said
 His mama she laughed, she said go, man, go
 Your daddy ain't your daddy, but your daddy don't know

Woe, is me, shame and scandal in the family
 Woe, is me, shame and scandal in the family

Meet a member: Beryl Hamilton

Francis and Muriel Hamilton were blessed with a New Years gift early in January 1930 with the arrival of a baby, an 11 pound 11 ounce “whopper”. This impressive baby was christened Beryl Jean Hamilton, a younger sister to Harold, twenty months older. Beryl was born at the start of the depression, and her pre school years were spent in this era. Her early years were spent at Bedwell Downs, a property between Wallangra and Yetman. The property included a tobacco plantation on the river flats.

Bedwell Downs was owned by Ben Wade, and Francis (France) kept the trucks going and later worked at the cordial factory.



Young Beryl at Bedwell Downs with her parents and brother.

One time Ben Wade was visiting Beryl’s father and when leaving ran over Beryl’s cherished tricycle. Beryl was most upset and admonished Mr Wade telling him in the harshest language that a 3 year old could muster: “Ben Wade, you dirty man! You ran over my dinky di”. Ben did the honourable thing and along with Beryl’s father, fixed the trike, along with a brand new seat which Ben provided.

This incident must have affected the esteemed business man, as 30 years later, when Beryl was working at the local council office a council employee mentioned that Beryl Hamilton worked there. Ben Wade replied “be careful of her, she’s vicious”.

Beryl says she has “few strong emotions” about her school days, it was just a place where all students went. She only had to walk over the road to Ross Hill Public school. Later when she went to Inverell High School she shared her pushbike with her schoolfriend and neighbour. English was her favourite subject, along with Chemistry and Maths II (geometry). Beryl loved to experiment.

Beryl obviously liked to write as well, as at the age of 11 when visiting an aunt in Dubbo she wrote one of her first poems:

“I can see from my front window
A house that’s made of stone
And out the front a widow
Who looks like meatless bone.”

At intervals Beryl sent poems and pars to the Picadilly Pages in the Woman’s Mirror, a weekly magazine which her mother enjoyed.

Meet a member: Beryl Hamilton continued.....

After a short time at secretary school Beryl obtained a job at Ted Lumbewe's electrical Sports and Toy shop and stayed for almost four years. Then a secretarial position at Inverell Municipal Council was advertised and her application was successful.

While working there, she was part owner of a neighbourhood store which her mother looked after and where Beryl worked after finishing at the council. Beryl also gave her mother a break at running the store by working at weekends. After four years the shop was sold and Beryl was granted fourteen months leave for a working holiday on a "shoestring budget" to the British Isles and Europe. Ten months were spent travelling and four months working in London. After this Beryl spent seven weeks touring the U.S.A. and Canada on her way back home.



Beryl in FIJI on her way back from her international tour

Although not quite retiring age, in 1989 Beryl decided that 40 years in local government was quite enough so she resigned to take up some hobbies that she had put aside for her retirement. One of those was writing, as she undertook a writing class at TAFE. When this class ended, the group formed the Wednesday writers, and they met every Wednesday since finishing their course. Beryl enjoys combining her writing with an interest in local and family history.

Beryl has had fun trying her hand at art, pottery, gem faceting and leadlighting as well as writing. In 1984 Beryl joined the IDFHG, the newly formed Inverell District Family History Group and has been a valued member since.

Beryl has generously given the group photographs of the Bedwell Downs and of her travels overseas and has also donated one of her paintings to the group.

Latest from the Devine Collection



DC 10066. Scoutmaster and cub. Merv Campbell and his father Colin



DC11444 Reverend Kenneth Patfield and Gwendoline Faint. Church of England. May 1953



DC11497 Brown family Salvation Army



DC10674 PP Board, with 1950s style photoshopping. In the middle of the front row is George Makim.



Left, DC10676 Another PP board "gent" though not in the DC10674 photo

Books	Price	Qty	Subtotal
District Schools – Where are they? <i>Researched & printed by IDFHG</i>	\$5		
District Churches – Where are they? <i>Researched & printed by IDFHG</i>	\$5		
Bundarra – Stepping Stone of the Gwydir. <i>By Claire Scholfield</i>	\$15		
A Fine Body of Men – The Kurrajongs – WWI. <i>Researched & printed by IDFHG</i>	\$30		
Interred at Inverell – 150 years of Inverell Cemetery. <i>Researched & printed by IDFHG.</i>	\$10		
History of the Graman School – 100 years of public Education 1880-1980	\$30		
Tingha Cemetery Transcriptions 1990 & Tingha Cemetery & District Burials (no headstones) 1873-1999. <i>Researched by R Wallis. Printed by IDFHG</i>	\$10		
Early Elsmore. <i>Researched by Pat Farrand. Printed by IDFHG</i>	\$10		
CDs <i>CDs may also be purchased in book form. Please contact the group for details</i>			
Inverell & District WW1 recruits. <i>Researched & Printed by IDFHG</i>	\$10		
Inverell & District Boer War Servicemen. <i>Researched by J Pischke. Printed by IDFHG</i>	\$10		
Byron Plains & Beyond – Inverell District pre 1910 Biographical Register. <i>Researched & Printed by IDFHG</i>	\$10		
Inverell Cemetery- Church of England Burials & Transcriptions 1869-1998. <i>Printed by IDFHG</i>	\$10		
Inverell Cemetery – Catholic Burials & Transcriptions. 1867-1998. <i>Printed by ID-FHG</i>	\$10		
Inverell Cemetery – Non-Conformist & Independent Burials & Transcriptions. 1867 -2002. CD. <i>Printed by IDFHG</i>	\$10		
Inverell Cemetery – New General Section Burials & Transcriptions. 1968-2000. Includes Inverell Cemetery Columbarium & Thorley & Sons Crematorium. <i>Printed by IDFHG</i>	\$10		
Please add \$9.00 for postage (within Australia) for up to 2 items For additional items please contact IDFHG BankDetails			
TOTAL :			
Please fill out below and: Post to - IDFHG, PO Box 367 NSW or Email to - inverellfamilyhistorygroup@gmail			
Name of Individual or Organisation:			
Postal Address:			
Phone No:		Email :	