



VOICES from the PAST

Newsletter of the Inverell District Family History Group Inc

ISSN 0815/1903 February 2023 Issue No. 136



**MEETINGS ARE HELD 3rd SATURDAY OF THE MONTH
1:00 PM AT THE RESOURCE CENTRE— INVERELL SHIRE PUBLIC
LIBRARY 55-59 CAMPBELL ST INVERELL**

The Inverell District Family History Group Inc may be contacted at:

Address: Inverell Shire Public Library
55-59 Campbell St,
Inverell NSW 2360

Postal: PO Box 367
Inverell NSW 2360

Email: info@inverellfamilyhistory.org.au

Web: www.inverellfamilyhistory.org.au

Membership:

Fees for the present financial year are:

Single membership	\$35
Family membership	\$45

Resources:

The resources of the History Group are available for use at:
Inverell Shire Public Library, 55-59 Campbell St, Inverell
Mondays, Wednesdays & Fridays 10am - 3pm
CLOSED TUESDAYS & THURSDAYS

Research:

**Research fees are \$35.00 per surname
including p & h**

A charge of 30c per copy applies for photocopying.

Our volunteers will deal with enquiries in their order of receipt. Replies may take a number of weeks, so please wait patiently.

Enquiries should be made to:

The Secretary
IDFHG Inc
PO Box 367 INVERELL NSW 2360

Please enclose your email address with research enquiry.

2022/2023

President: Kathy McLeod
Secretary: Di Atkinson
Treasurer: Lorraine Watson
Newsletter Editor: Ken McLeod

IDFHG Inc is a member of NSW & ACT Association of Family History Societies

history on the macintyre

IN THIS ISSUE

Notice Board.....	2
Research update.....	3
What's new in the Library.....	4
Inverell Butter Factory.....	6
100 years of the Country Women's Association.....	8
The Story of the Ellinis.....	10
View from an Archaeologist.....	11
Invitation to become involved.....	12
Devine Photos.....	13

Voices from the Past is the official journal of the Inverell District Family History Group Inc and is published in February, June and October each year.

Opinions expressed and statements in this newsletter do not necessarily represent those of the group, which accepts no responsibility for them.

Other Societies or Groups may copy original material published in this newsletter, provided the source is acknowledged.

Otherwise, production of articles in *Voices from the Past* may be made only with the written permission from the Group.

Notice Board



Next Meeting
Saturday 18th February 2023
 Meeting starts at 1pm : Cuppa & chat afterwards
 Inverell Shire Public Library 55-59 Campbell St, Inverell
 All Welcome



The Christmas Break Afternoon Tea Party held by the group in December, 2022 was well supported. It was a great opportunity to have a chat and unwind after a busy year of research for the group.

Save the Date

18th March 2023

IDFHG will be hosting a talk on

Conditional Purchases

This tricky topic will be presented by

Wayne Hoppe

president of the Armidale Family History Group.



At the Inverell Shire Library

Time 1pm

Cuppa and a chat afterwards

All Welcome



Bingara District Historical Society

INVITATION to ALL MEMBERS

The Bingara District Historical Society, after many years of fund raising are finally in a position to open a new Military Museum. The museum is to be located in the old Salvation Army building at 20 Maitland Street Bingara.

The Society are planning a grand opening on Saturday 22nd April 2023. It will start with morning tea at 10am, followed by speeches and viewing of our collections, concluding with a B-B-Q lunch at 12pm.

Contact Judi Peterson 0428 345 600 or email bingaramuseum@gmail.com

Research Update

Henry Harrison 1817-1913

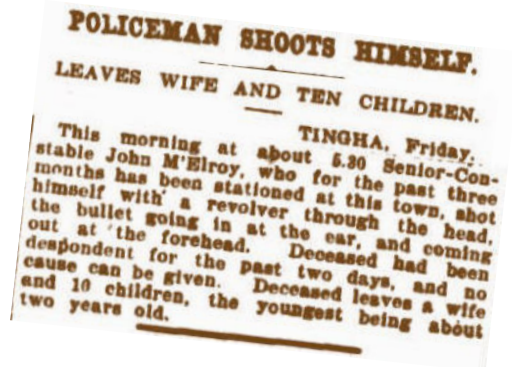
Born in Warwickshire in 1817 Henry was convicted of stealing and transported to Australia when he was 18 years old. When granted his certificate of freedom Henry made his way to Wellingrove where he met Yibbatjang Ngarabul/Nugumbul woman Lena. They married in Glen Innes and went on to have 7 children. Henry set up a sawmilling operation at Wellingrove in the 1850s. Lena died in Emmaville in 1875. Henry died at Wellingrove at age 96 in 1913.



Henry's headstone at Wellingrove was restored in 2015 by the Inverell Reconciliation Group.

Senior Constable John McElroy 1858-1909

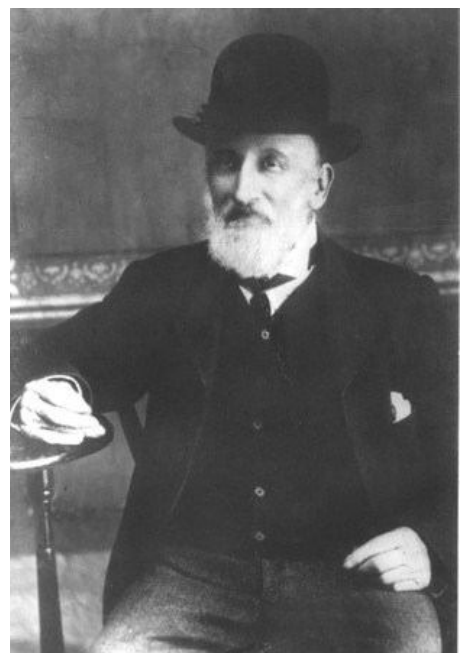
John McElroy joined the NSW police in 1882. From 1888 until his death he was appointed to Ashford, Howell and Tingha stations. Tragically while serving at Tingha he shot himself leaving his wife and ten children. His wife, Stuart, (an unusual name for a woman) moved into Inverell with her children and purchased a house in Brae St. It appears that despite the tragedy the children thrived. Ethel the eldest girl became a teacher at Ross Hill until her marriage to another policeman William Willard. Adelaide who never married worked as a book keeper and was employed by solicitors Borthwick & Butler. She lived in Inverell until her death in 1965. The eldest son Clarence was an apprentice to Charles Dowe, a chemist in Inverell, when he joined the AIF and was sent to the battlefields of France in WWI. Sadly he died of wounds there in 1917. Another daughter Bertha, who also never married, worked as a saleswoman in Leeton, NSW for many years. Lionel the second son moved to Sydney employed as a fitter. He married Ellen Eather in 1929. Reginald began his career in the postal service as a telegraph messenger in Inverell. Over the years he rose to the position of postmaster and held appointments at Moree and Cassilis. The youngest son Eric, was appointed junior clerk with the Inverell Municipal Council in 1917. He later moved to Sydney where he married and continued work as a clerk. Vera married George McElroy and lived in Muswellbrook where George worked as a shop assistant. Ruth married William Holtsbaum, who at the time was a clerk with the McIntyre Shire Council. The couple later moved to Katoomba. The youngest child Iris, married Spencer Groom a journalist from Too-woomba. Constable McElroy's wife Stuart stayed at her house in Brae Street until about 1922 when she moved to the Bondi/ Waverley area in Sydney until her death in 1949.



William Perks Burtenshaw 1823-1908

William was the son of a wealthy textile mill and warehouse owner. After a disagreement with his father (which sadly was never resolved), William was sent to Australia. With his fare paid for and provided with an allowance William arrived in Sydney in the mid 1840s. In 1849 he married Ann Jane Best an Irish famine orphan who came to Australia on the "Earl Grey" in 1848. William & Ann made their way to the New England area where William worked on a number of well known stations including Wellingrove, Clarevaux & Furracabad. The couple had 9 children. In the 1870s the family settled on a block at Rob Roy. Whilst here William was the secretary of the committee which established the Rob Roy Gully Public School in 1880 and their daughters Emily & Christina were among the first to attend. Ann Burtenshaw died in 1883. In his old age William moved to Gilgai where he died in 1908.

William Perks Best - photo courtesy of family



What's New in the Library



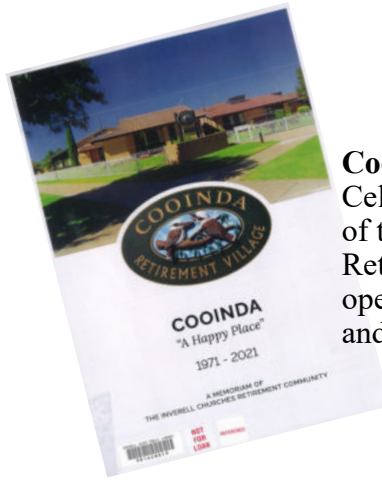
The Road to Torrington: Remembering Mollie McNutt by Rita Young. Mollie was born at Maitland in 1885 to John & Margaret Shaw. After the family moved to Hillgrove, Mollie entered the service of the Education Department as a pupil teacher. She went on to teach at Armidale & for a short time in Inverell. In 1911 she married fellow teacher Andrew McNutt and moved to Torrington where Andrew was teaching. It was here that Mollie wrote and published her book of verse called "Songs of Bushland". Tragically Mollie died shortly after in 1919.

Edward John & Catherine Christina Rogers
"Glendon" Delungra – A family history

Trophies in the Window: Chinese department stores, rugby league & the great depression in New England . An article by Rodney Noonan

Ancestors & Descendants of **Alexander McDonald & Margaret Hussey** by Graham Maxwell & Joy Cumming

Redistribution of Electoral Districts, 2021



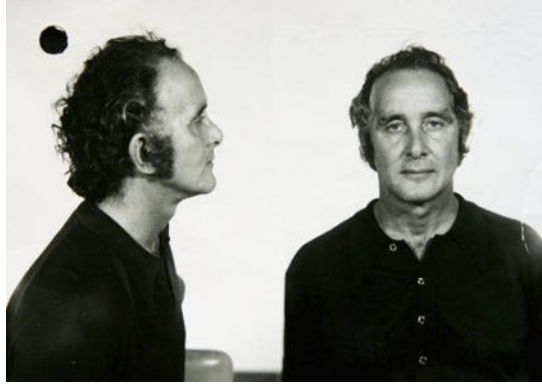
Cooinda "A Happy Place"
Celebrates the 50 year history of the Inverell Churches Retirement Community which opened in 1971. Researched and written by Bob Bensley.

Butter & Bacon Factory ledgers

These ledgers have been kindly donated to the IDFHG. The donor has a passion for old books and found them some years ago in a charity shop over on the coast (no idea how they got there). We are so pleased she contacted us when the time came for her to pass them on (and get that space back in her linen cupboard!). It is amazing how items like these find their way back home as the donor has no connection with Inverell at all.

The ledgers date from 1929 and go through to the early 1960s. The most interesting for us are the early entries in the Pig Register which lists the names of farmers and individuals who sold their pigs to the factory. Many of these names are familiar to us for e.g. Campbell, Rainger, Thwaites, Finney, Sweaney, Lockrey, Daley, Fox, Lamont, Tonkin, Turner Bros, Kennedy, Gilhome etc.





These four characters probably never met, but they do share something in common. See page 10

*Top left clockwise—
Rock legend David Bowie, the great train robber Ronald Biggs, IDFHG member Steve Day and former Australian prime minister John Curtin.*



David Bowie courtesy of BBC culture, Ronald Biggs courtesy of New York Times, Steve Day courtesy IDFHG, John Curtin courtesy of Web archive of the WA Government.

Vale Geoff Millard

1939-2023

After a long illness we are saddened to hear of Geoff's passing. Geoff and his wife Joyce (deceased) were members of our group for many years. A keen photographer, Geoff took many photos of IDFHG group events and functions and was an integral part of our IT team looking after our computers and managing the software. I am sure many of us remember seeing photos and hearing tales of his camping travels throughout Australia.

Our thoughts go to his children Ian, David and Kathryn and their families.



Our newsletter editor Ken, trying out the new filing cabinets recently purchased.



Our president Kathy turned 60 recently, still one of our younger members.

Other members of the Family History Group helped Kathy celebrate at the Northern Foreshores of Copeton Dam function centre.

The Inverell Co-operative Butter & Bacon Company

In the late 1800s Inverell had very few established dairy farms thriving on the fertile soils of the McIntyre River valley. Many selectors and farmers ran a few cows on the sideline and even families in the towns and villages had a milking cow which they kept on the local common. While Milk production was high and butter and cheese were produced, the market was restricted mainly to local sales with some butter being sent further afield in the winter months only. This all changed with the announcement of the railway coming to Inverell.



The first Inverell butter factory was built in 1902 and destroyed by fire in 1925.

In 1899, while the railway still under construction, the Farmers & Settlers Association began investigating the viability of a butter factory.

Initial enthusiasm was low however over the next couple of years impetus increased after a visit from a government dairy expert and with the opening of the Glen Innes Butter Factory in 1900. Support was gained from the large landholders of the district and enough funds were obtained by selling shares to build the factory in early 1902 for a cost of £3100. The site chosen was in Mr White's paddock on the northern side of the railway line (Edwards St). The factory officially opened in October 1902 and with it the dairy industry around Inverell boomed. A number of closer settlement subdivisions attracted many new settlers to the area and dairying provided a reliable and regular cash flow throughout the year. By the end of 1904 over 60 dairies and 3000 cows were producing milk & cream in the district. Despite the new industry eventually flourishing the early years for the factory were fraught with difficulties. Freight by rail to Sydney was very slow and very expensive and the factory suffered from a rapid turnover of managers (nine in the first six years). Investors had received no dividends and suppliers were receiving less than their coastal counterparts. The turn around came in 1908 when the original company was restructured as a cooperative and a young Armand Edgar Sweaney was appointed as manager. He was to remain in the job until the factory closed in the 1950s.



Armand Edgar Sweaney 1883-1958

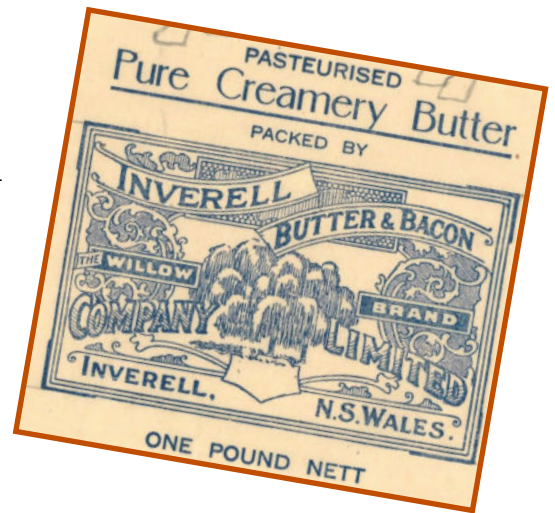
A. E. Sweaney was born in Robertson, NSW in 1883 to Alexander Sweaney and Alice Jane Pryce. Alexander was an award winning butter maker and managed various dairy co-operatives in the southern highlands of NSW.

Armand started his distinguished dairying career at Mittagong working in the industry with his father and brothers. After attending a dairy instruction class run by the NSW Agriculture Department, A. E. moved to Billinudgel on the north coast of NSW and worked as a certified dairy herd tester. In 1908 he took up employment at the Inverell Co-operative Butter Company where he remained until his death in 1958. In 1908 he married Elizabeth Smith in Inverell and the couple went on to have 7 children. A number

of Armand's family including his parents also moved to Inverell and were involved in dairying and butter making.

The Inverell Co-operative Butter & Bacon Company continued...

In 1911 the Inverell Co-operative Butter Company added the processing of bacon to the enterprise. Bacon production went hand in hand with producing butter as the pigs were fed skim milk, a by product left over from skimming the cream. While there was already a small bacon factory operating in Inverell the directors of the co-operative identified the need for a larger scale operation. Operating since 1905, the Woods & Reay "Waratah" bacon factory operated out of "Rosenstein", Colin Ross' old winery. In view of Edwin Reay having just spent a considerable sum in updating the premises the directors paid out £100 in compensation.



The Willow Brand

The new factory which opened in early 1912, was designed by J. F. O' Connor and built by B. M. Wade. Situated next to the butter factory, a siding to the railway was constructed along with specially designed pens that allowed for the pigs to be unloaded directly from the rail cars.



The second butter factory built by BM Wade in 1925. The bacon factory, which remained undamaged by the fire, can be seen on the left.

Restructured as the Inverell Co-operative Butter & Bacon Company it went from strength to strength under the guidance of Mr A. E. Sweaney. Even after disaster struck in 1925, when the butter factory burnt down with a reported loss of £10,000, the factory was quickly rebuilt and the company continued to prosper.

By 1933 the company's annual output was over £1,000,000 which returned over £60,000 to producers. The "Willow" brand of butter had won over 150 prizes including the champion export butter at the Brisbane National Show.

It wasn't until 1950s the Inverell Co-operative Butter & Bacon Company ran into financial troubles, due to the downturn of dairying in the district and the introduction of fixed pricing of butter and bacon, resulting in its eventual closure. Just prior to its closure a honey packing depot was set up in part of the factory.

100 years of the Country Women's Association

It seems every country town has a CWA, a vital organisation which has served Australian communities now for a century. The origins of this well loved organisation are almost local, starting from the energy and commitment of a well known and respected woman from Keera Station between Bingara and Inverell. Grace Munro was actively involved in establishing some organisation which could support isolated people and communities spread out across the regional and rural areas of Australia.

Grace Munro was born Grace Gordon, daughter of George Gordon of Strathbogie station. From Jillian Oppenheimer's books we get a picture of a confident, capable and competitive young lady growing up in a male dominated world of the 1890s. As she matured into a young adult she was equally at ease on horseback out in the paddock or at social gatherings in Sydney. She seemed to be both resourceful, energetic and well connected.

In 1898 she married Hugh Munro of Keera Station. She had four children, and tragically one of them, the youngest son died of croup. This tragedy happened when Grace was in Sydney with her daughter who had acute appendicitis.

From this tragedy, and others like it in other families, grew the determination to ensure country women had better access to basic services we take for granted. This happened in 1911, and people around the country were lobbying to have better health services.

From this important issue Grace Munro went on to help organise a conference of country women to be held in April 1922, with the key stated aim of "improving the conditions of the women on the land". A number of papers were delivered at the conference and influential people were giving valuable assistance. Among the influential people was Colonel Bruxner who was then the state member for Tenterfield. Later Colonel Bruxner was to become Sir Michael Bruxner, and he was pivotal in the emergence of the Country Party, which had overlapping issues in common with the country women.

The Country Women's Association formally came into being at the end of this conference. Grace Munro was the inaugural President of the provisional committee.

In 1924 a local branch of the CWA was formed. Grace Munro spoke at the inaugural meeting and outlined the issues of women and children's health and welfare the association wished to address. These included maternity wards in every country hospital, reduced country railway fares with better sleeping berths, the lobbying for more women to take part in country development by their appointments to hospital committees & municipal councils, the establishment of baby health clinics and rest rooms, affordable telephones for small households and assisting the Bush Book Club in establishing libraries in country centres. Over fifty women attended this meeting held in the Town Hall and resulted with Inverell's Lady Mayoress, Mrs James McIlveen, elected as president. The vice presidents were Mrs H. W. R. Hughes, Mrs E. G. Denshire & Mrs G. Wyndham. Mrs G. A. Codrington was elected as secretary and Mrs K. Reid as treasurer.

The Inverell branch of the CWA attracted a strong membership and soon after with money from fundraising including an inaugural annual ball and a Linen Tea in the School of Arts the group was able to open the first CWA Rest Room in the Soldiers Club on the corner of Evans & Campbell St.



Grace Munro: courtesy Mirani Collection, Jillian Oppenheimer *Munro's Luck*. This photo shows Grace in the 1920s. By 1923 there were 68 branches of the CWA, and more than 100 by 1926. By then, Grace had to retire because of health reasons. However, she still remained active in raising funds for rest centres, holiday homes, the Red Cross and St John's Ambulance. She was deservedly awarded an M.B.E. in 1935. Grace still managed to live until 1964 dying at the age of 85.

The CWA grew in popularity and other branches were formed in the district at Delungra, Mount Russell, Bukkulla, Bonshaw & Ashford.

During these early years of the organisation the CWA was responsible for a number of initiatives which improved the lives and health of country women and children. In 1926 the Inverell CWA leased Mrs Snows late residence in Rivers St. to be used as a rest home. Later they were able to purchase the building for £700. The house allowed rural women an alternative from the local hotels to rest with a cup of tea on shopping day before the tiring trip home. Board & lodging was also available for women awaiting birth in one of the private hospitals. Mrs Murray was engaged as the housekeeper. The bedrooms were named Elsmore, Nullamanna & Auburn as ladies in these localities were responsible for furnishing them. In its first year the Rest Home had 265 women sign in to use the facility, it accommodated 49 women & 20 children and held two minor operations (teeth extraction under anaesthetic). Three wedding parties dressed at the rooms and one wedding breakfast was held there.



Inverell CWA Baby Health Centre in Rivers St. Courtesy Serving the Country— The history of the CWA in NSW

In 1927 the CWA Younger Set was established. Open to young women from 18 to 30, these members were instructed in First Aid, Mothercraft, Home Nursing and organised many social functions. As a result of their enthusiastic fundraising a Baby Health Centre was opened in the rest home in 1930. Mothers and mothers to be could consult with Sister Judd on the welfare of themselves and their children. In 1932 a new Baby Health Centre was built, also in Rivers St. and was in continual use for decades. The old Rest Home was sadly demolished in 1953.



Girls' Hostel (1951)

As early as 1926 the organisation understood the need for a hostel in Inverell for country girls to attend school. The first of these was set up under the matronship of Mrs Woodbury on the Bundarra Rd. When the new high school was built a private hostel opened in Howard St opposite the school. Called the Edinburgh Hostel, Mrs Rutherford the matron also offered music lessons and the use of a tennis court. The hostel continued to be run privately until 1945 when the CWA took the running of it with The Department of Education

paying the rent. The CWA spent over £300 refurbishing the house which could accommodate up to 20 girls under the supervision of Matron O'Brien. The cost was 25/- per child. The hostel was hugely popular and by 1950 the local CWA were able to purchase the house and make further renovations. In 1966 the hostel burnt down but was rebuilt within 12 months. It continued to operate until 1981.

Local branches of CWA in Inverell & Delungra still meet today and continue to lobby for the education, health and welfare of country communities.



Inverell CWA ladies with members of the local Red Cross making camouflage nets to send off to Sydney in 1941, only months before the Japanese bombing of Pearl Harbour in December 1941. Courtesy Inverell Times.

Early CWA Presidents

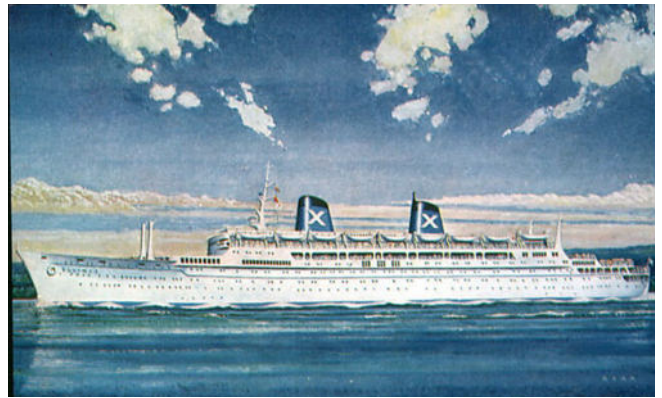
1924—Mrs J. McIlveen
 1925—Mrs A. W. Pulsford
 1926—Mrs Cedric Campbell
 1927—Mrs E. G. Denshire
 1928—Mrs Harold Scott
 1929—Mrs G. Wyndham
 1930—Mrs Harold Scott
 1931 to 1933—Mrs V. J. G. See
 1934—Mrs Harold Scott
 1935—Mrs Rowland
 1936—Mrs L. M. McGufficke

The Story of the Ellinis

Featuring David Bowie, Ronald Biggs, John Curtin and Steve Day

What do these four unlikely characters have in common? Not much it would seem. The linking theme involves a ship called the Ellinis. This ship started life in 1932 as the Lurline, a luxury cruise ship taking well-heeled passengers between San Francisco and Hawaii. In WWII it was commandeered to become a troop ship and at one stage carried our Prime Minister of the time, John Curtin, from Australia to the U.S. where he met with the American President, Franklin Roosevelt in 1944.

After the war, the Lurline was refitted to resume work as a luxury liner in 1948 on her original route, which was then extended to the South Pacific. She suffered serious engine failure in 1963 and was bought by the Chandris line and had its engine repaired plus having a makeover to re-emerge as the Ellinis.



RHMS Ellinis in her prime. She played an important role in Australia's post war immigration, bringing out many British immigrants. Courtesy Museums Victoria Collection.

The Ellinis did the Southampton to Australia run taking many British migrants to Australia. This involved 50 trips taking immigrants to Australia over a ten year period. In 1968 the ship brought out many British immigrants including a family from Wales who were sponsored by BHP to work at the Port Kembla steel works. This family included IDFHG member Steve Day aged 8. Steve remembers the voyage as a great adventure and lots of fun for a young boy.

The ship also did cruises around the world. One of these cruises in 1970 included as a passenger the notorious Ronald Biggs (of the great train robbery fame) who had escaped to Australia but had to move along as his true identity had been revealed to police. He escaped from Australia on board the Ellinis (under the name Mike Hayes) and got off in Panama, to fly from there to Brazil where he settled in 1971. In 1973 the singer/ song writer David Bowie was on board for a cruise where he penned the song "Alladin Sane" which appeared on his album of the same name.

After her last voyage to Australia in 1977 the Ellinis returned to Europe. She spent the next ten years cruising in the Mediterranean until finally being decommissioned and broken up in 1987.



Steve (right) and his two brothers Rob and Richard on board the Ellinis as it cruises to Australia in 1968. Photo courtesy Steve Day.



A model of the Ellinis, one of 10 in Australia. This particular model is now owned by Rob Day and is on display at Gilgai. Photo courtesy Steve Day

View from an Archaeologist

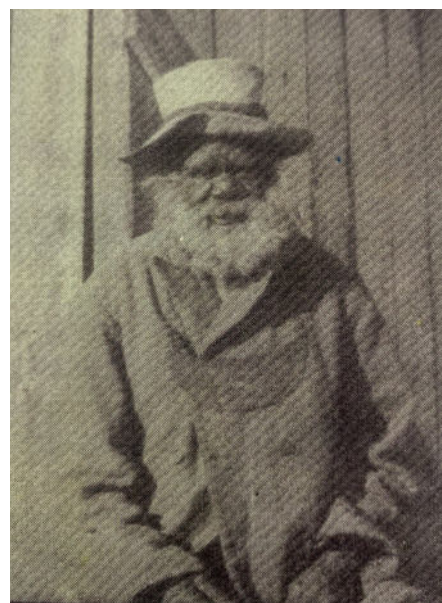
The Family History group had Tony Sonter as a guest speaker at our November meeting. Tony is a local archaeologist and an avid collector of ephemera and objects that, while they were once common place, are now obscure. From his field work he often comes across some interesting and bizarre finds. His entertaining talk included some objects from his collection such as pieces of metal, hand made nails and bricks, medals from WWI with Inverell embossed on them, and photographs of a local aboriginal man called “Schoolmaster Jackey”. Jackey was a respected aboriginal chief and stockman on Pindari who, among other things, was called as a witness in a murder trial at Nullamanna in 1893.

We often forget that in building during the 19th century it would sometimes be easier to make your own construction materials, like nails from iron or bricks fired from the local clay. The nails which Tony bought along were square in cross section (making it easier to straighten?). These nails were probably made using a blacksmith’s forge. Nails in earlier centuries were even recycled, just straighten them out and go again.

Also amongst the display was an interesting coolamon made from a piece of old iron thrown away. It was unusual as coolamons were traditionally made of wood or bark.



Tony showing some of his finds. Note the metal coolamon on the left hand side of the desk. Some hand made bricks are shown near the right hand side of the desk.



Schoolmaster Jackey so named as he always wore a schoolmasters coat. Just visible in this picture is the brass breast plate he was given proclaiming “Schoolmaster Jackey King of Inverell, 1880”. He died in 1921 and was thought to be over 90 years of age.



Tony displaying a water tank’s heavy lid which he found on his field work. The inscription on the lid is “Lancaster and Bawn Poplar London”. Lancaster and Bawn operated from 1870-1890. Constructed as ship tanks, these eventually found their way to rural and regional Australia, since people were resourceful and often recycled materials. The hole in the middle was often fitted with a cork, wood or soft metal bung. This type of tank was invented in 1808 by a Cornishman Richard Trevithick to replace the classical wooden barrel we associate with sailing ships. (Source: Michael Pearson, Australasian Historical Archaeology 1992)

Invitation to Become Involved Can You Help?

The Gilgai Public Hall and Recreational Reserves Land Manager (GPHRRLM) is planning a commemorative event to occur on the **17th September 2023** and would love to hear from you if you have any information, memorabilia or photos that relate to the Memorial or Gilgai in the past. We are particularly seeking **descendants** and **photographs** on the men who are listed below.

Great War 1914-1918

Oliver Arthur Cross
Cecil Daskey
Frederick James Hines
Lawrence Madden
Bertie Edward Marsh
Herbert John Stone
Peter Rooney
Edgar Leslie Woodford
George G Woodford
Gilbert Wright
Percy Wright

WWII 1939-1945

John St Leger Baldwin
Hubert Ferris
Donald H McNaught
Vernon Schwenke
Fred Lindsay Staggs



The Gilgai War Memorial is thought to have been the first memorial dedication within the Inverell Shire. It was constructed by C.S. Thorley of Inverell using funds raised by the small community of Gilgai. The Gilgai Memorial was unveiled early in August 1923 by Mrs Woodford, who had two sons killed in 'the Great War' in Europe. Every eligible man in Gilgai enlisted in the war effort, eleven of whom gave their lives.

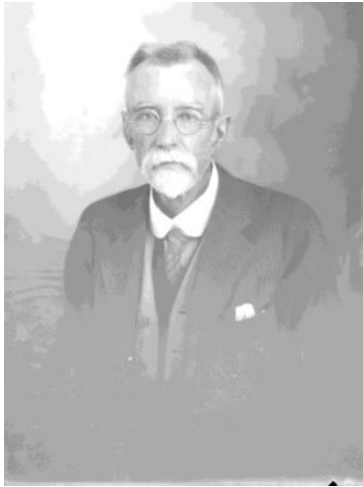


Information can be:

- Dropped in to IDFHG at the Inverell Library
- Emailed to inverellfamilyhistorygroup@gmail.com
- or please call Kathy 0400 455 871 or Di 0428 214 272

The Devine Collection

We have now digitised over 10800 negatives. Merv and Beryl seem to think many are from the mid fifties.



DC9521 Stirton



DC9644 Reverend Butler, and presumably his wife.



DC9628 Heron Family



DC10748 "Boney Gent" Dressed for the show or off to the races perhaps.



DC9640 Daley Family



DC9763 Andrews, looks like 3 generations. Is this from the WWI days?



DC9650 Mrs Madden with dog. This looks like it's a photo of a photo

Can you Help?

Any further information on the people in these photos would be greatly welcomed.

Books	Price	Qty	Subtotal
District Schools – Where are they? <i>Researched & printed by IDFHG</i>	\$5		
District Churches – Where are they? <i>Researched & printed by IDFHG</i>	\$5		
Bundarra – Stepping Stone of the Gwydir. <i>By Claire Scholfield</i>	\$15		
A Fine Body of Men – The Kurrajongs – WWI. <i>Researched & printed by IDFHG</i>	\$30		
Interred at Inverell – 150 years of Inverell Cemetery. <i>Researched & printed by IDFHG.</i>	\$10		
History of the Graman School – 100 years of public Education 1880-1980	\$30		
Tingha Cemetery Transcriptions 1990 & Tingha Cemetery & District Burials (no headstones) 1873-1999. <i>Researched by R Wallis. Printed by IDFHG</i>	\$10		
Early Elsmore. <i>Researched by Pat Farrand. Printed by IDFHG</i>	\$10		
CDs <i>CDs may also be purchased in book form. Please contact the group for details</i>			
Inverell & District WW1 recruits. <i>Researched & Printed by IDFHG</i>	\$10		
Inverell & District Boer War Servicemen. <i>Researched by J Pischke. Printed by IDFHG</i>	\$10		
Byron Plains & Beyond – Inverell District pre 1910 Biographical Register. <i>Researched & Printed by IDFHG</i>	\$10		
Inverell Cemetery- Church of England Burials & Transcriptions 1869-1998. <i>Printed by IDFHG</i>	\$10		
Inverell Cemetery – Catholic Burials & Transcriptions. 1867-1998. <i>Printed by ID-FHG</i>	\$10		
Inverell Cemetery – Non-Conformist & Independent Burials & Transcriptions. 1867 -2002. CD. <i>Printed by IDFHG</i>	\$10		
Inverell Cemetery – New General Section Burials & Transcriptions. 1968-2000. Includes Inverell Cemetery Columbarium & Thorley & Sons Crematorium. <i>Printed by IDFHG</i>	\$10		
Please add \$9.00 for postage (within Australia) for up to 2 items For additional items please contact IDFHG Bank Details			
TOTAL :			
Please fill out below and: Post to - IDFHG, PO Box 367 NSW or Email to - inverellfamilyhistorygroup@gmail			
Name of Individual or Organisation:			
Postal Address:			
Phone No:		Email :	